

grow with us

Week ending 1.3.24

achievement



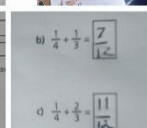
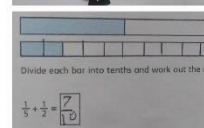
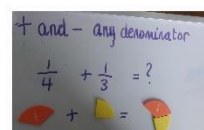
belonging



compassion

Amazing things we have been up to this week!

Welcome back after what was hopefully a lovely and restful half term break. We are super excited to celebrate that our admission number doubled over the half term and we now are a school of 4! Welcome to Grow Olivia (y10) and Sophie (y8). It's been an exciting first week back with the opening of our brand new garden area. Huge thanks to Adam and AB Landscapes for all his hard work over the break to get this done on time! The students have started a design project with Hannah this week where they have discussed how they can design, develop and use this space. Some ideas so far are to decorate it with fairy lights and bunting, to have some picnic benches and shelter and not forgetting the plant pots for our green fingered students! Here at Grow, we will never get rid of practical equipment! Research shows the CPA (concrete-practical- abstract) approach promotes a deeper understanding of maths. Having hands on experiences or real-life experiences is what makes things make sense!



We took four students to Salts Mill on Thursday to explore the Hockney art exhibition and the area of Saltaire. See our facebook page for photos and videos – it was a jam-packed day! We arrived at the Mill and explored the building and the gallery. Lilly especially enjoyed the gift shop! We then had a walk to the local park where Sarah read us the story of Titus Salt. We were super lucky to even meet the author of this book and have a photo with her!

And finally, we have finished off with a wet, cold and slushy trip to the farm which only lasted half an hour before Gill was forced to make the decision to close the farm due to the extreme weather conditions! The day was not wasted as all the students returned to Grow to complete some Art therapy with Liz. Painting and sketching while listening to calming music and working collaboratively, yet calmly.



What's on next week?

Thursday – World book day. Please remind students to bring in their favourite book.

Friday – Harwes Farm Visit (LG/OJ/SW)

Important Information

Uniform orders are expected to be ready this week. Please organise payment with the office before collection.

Facebook – we have had to close the original page due and now have one you can follow rather than friend request! Find us @growschool.

You may have seen an advert for an experienced TA to join our team which is extremely exciting.

Change of school day: Students to arrive between 9.45am and 9.55am. Tutor time will commence at 10am, and lesson 1 will start at 10.10am. Students now finish school at **3.15pm** after a daily reflection session with their key person.

Contact us

Email: office@growschool.co.uk

Phone: 01282 541949

Website: www.growschool.co.uk